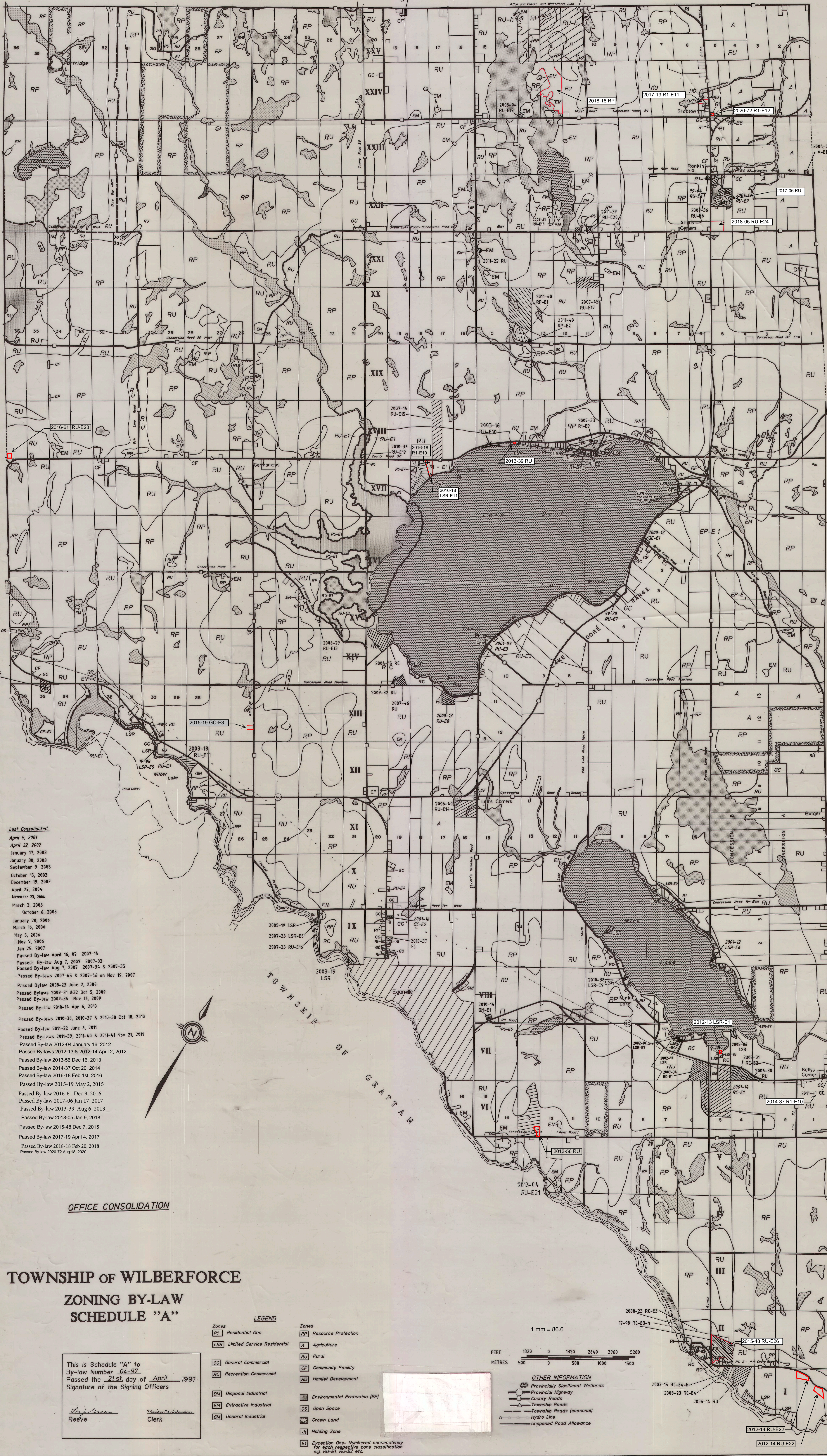


2002-05  
CF

2005-09 See Schedule B



- Last Consolidated**
- April 9, 2001
  - April 22, 2002
  - January 17, 2003
  - January 30, 2003
  - September 9, 2003
  - October 15, 2003
  - December 19, 2003
  - April 29, 2004
  - November 23, 2004
  - March 3, 2005
  - October 6, 2005
  - January 20, 2006
  - March 16, 2006
  - May 5, 2006
  - Nov 7, 2006
  - Jan 25, 2007
  - Passed By-law April 16, 07 2007-14
  - Passed By-law Aug 7, 2007 2007-33
  - Passed By-law Aug 7, 2007 2007-34 & 2007-35
  - Passed By-laws 2007-45 & 2007-46 on Nov 19, 2007
  - Passed By-law 2008-23 June 2, 2008
  - Passed By-laws 2009-31 & 2009-32 Oct 5, 2009
  - Passed By-law 2009-36 Nov 16, 2009
  - Passed By-law 2010-14 Apr 6, 2010
  - Passed By-laws 2010-36, 2010-37 & 2010-38 Oct 18, 2010
  - Passed By-law 2011-22 June 6, 2011
  - Passed By-laws 2011-39, 2011-40 & 2011-41 Nov 21, 2011
  - Passed By-law 2012-04 January 16, 2012
  - Passed By-laws 2012-13 & 2012-14 April 2, 2012
  - Passed By-law 2013-56 Dec 16, 2013
  - Passed By-law 2014-37 Oct 20, 2014
  - Passed By-law 2016-18 Feb 1st, 2016
  - Passed By-law 2015-19 May 2, 2015
  - Passed By-law 2016-61 Dec 9, 2016
  - Passed By-law 2017-06 Jan 17, 2017
  - Passed By-law 2013-39 Aug 6, 2013
  - Passed By-law 2018-05 Jan 9, 2018
  - Passed By-law 2015-48 Dec 7, 2015
  - Passed By-law 2017-19 April 4, 2017
  - Passed By-law 2018-18 Feb 20, 2018
  - Passed By-law 2020-72 Aug 18, 2020

**OFFICE CONSOLIDATION**

**TOWNSHIP OF WILBERFORCE  
ZONING BY-LAW  
SCHEDULE "A"**

This is Schedule "A" to  
By-law Number 04-97  
Passed the 21st day of April 1997  
Signature of the Signing Officers

*Stephane Reeve* *Michael W. Schindler*  
Reeve Clerk

**LEGEND**

<b>Zones</b>	<b>Zones</b>
<b>RI</b> Residential One	<b>RP</b> Resource Protection
<b>LSR</b> Limited Service Residential	<b>A</b> Agriculture
<b>GC</b> General Commercial	<b>R</b> Rural
<b>RC</b> Recreation Commercial	<b>CF</b> Community Facility
<b>DM</b> Disposal Industrial	<b>HD</b> Hamlet Development
<b>EM</b> Extractive Industrial	<b>EP</b> Environmental Protection (EP)
<b>GM</b> General Industrial	<b>OS</b> Open Space
	<b>CL</b> Crown Land
	<b>H</b> Holding Zone
	<b>E1</b> Exception One- Numbered consecutively for each respective zone classification e.g. RU-E1, RU-E2 etc.

